

# SHREYANS IMPORTS END EXPORTS



Address: Plot 6/2, Shed No 6, Sumukh Ind Estate, Phase 1, Opposite Kiran Industries, GIDC, Vatva, Ahmedabad 382445, India

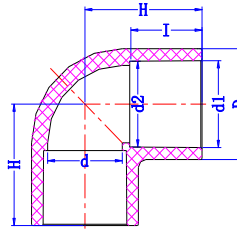
Cell: +91 90 999 89 276, +91 90 999 89 280 Web: www.shreyanswater.com

## DIN PN16 Fittings



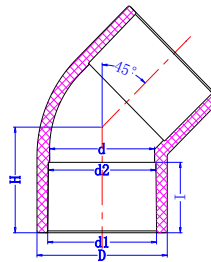
### 1. 90 Degree Elbow (SxS)

| Nominal | Socket Type |       |       | Structural Diameter |       |       |
|---------|-------------|-------|-------|---------------------|-------|-------|
| Size    | d1          | d2    | l     | D                   | d     | H     |
| 20      | 20.3        | 20.1  | 16.0  | 27.0                | 17.0  | 28.5  |
| 25      | 25.3        | 25.1  | 19.0  | 33.0                | 23.0  | 34.0  |
| 32      | 32.3        | 32.1  | 22.0  | 40.5                | 29.0  | 40.5  |
| 40      | 40.3        | 40.1  | 26.0  | 49.1                | 37.0  | 48.5  |
| 50      | 50.3        | 50.1  | 32.0  | 61.0                | 47.0  | 57.0  |
| 63      | 63.3        | 63.1  | 38.0  | 75.0                | 60.0  | 71.0  |
| 75      | 75.3        | 75.1  | 44.0  | 87.0                | 72.0  | 83.0  |
| 90      | 90.3        | 90.1  | 51.0  | 104.0               | 87.1  | 98.0  |
| 110     | 110.4       | 110.1 | 61.0  | 125.4               | 106.1 | 118.0 |
| 140     | 140.5       | 140.2 | 77.0  | 162.0               | 133.0 | 147.0 |
| 160     | 160.5       | 160.2 | 86.0  | 186.0               | 154.0 | 166.0 |
| 200     | 200.6       | 200.2 | 130.0 | 240.0               | 185.0 | 230.0 |
| 250     | 250.8       | 250.3 | 145.0 | 290.0               | 239.0 | 290.0 |



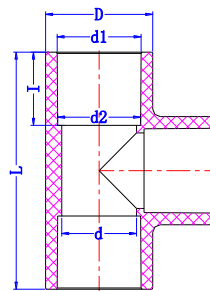
### 2. 45 Degree Elbow (SxS)

| Nominal | Socket Type |       |       | Structural Diameter |       |       |
|---------|-------------|-------|-------|---------------------|-------|-------|
| Size    | d1          | d2    | l     | D                   | d     | H     |
| 20      | 20.3        | 20.1  | 16.0  | 29.0                | 17.0  | 24.0  |
| 25      | 25.3        | 25.1  | 19.0  | 34.9                | 23.0  | 28.5  |
| 32      | 32.3        | 32.1  | 22.0  | 43.0                | 29.0  | 33.0  |
| 40      | 40.3        | 40.1  | 26.0  | 52.3                | 37.0  | 39.0  |
| 50      | 50.3        | 50.1  | 32.0  | 59.0                | 47.0  | 48.0  |
| 63      | 63.3        | 63.1  | 38.0  | 72.0                | 60.0  | 57.0  |
| 75      | 75.3        | 75.1  | 44.0  | 87.6                | 72.0  | 66.0  |
| 90      | 90.3        | 90.1  | 51.0  | 104.7               | 87.1  | 71.5  |
| 110     | 110.4       | 110.1 | 61.0  | 132.0               | 106.1 | 82.5  |
| 140     | 140.5       | 140.2 | 77.0  | 162.0               | 133.0 | 108.0 |
| 160     | 160.5       | 160.2 | 86.0  | 186.0               | 154.0 | 120.5 |
| 200     | 200.6       | 200.2 | 130.0 | 240.0               | 185.0 | 182.0 |
| 250     | 250.8       | 250.3 | 145.0 | 290.0               | 239.0 | 215.0 |



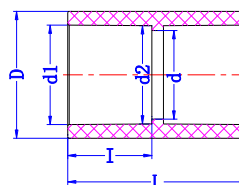
### 3. Tee (SxSxS)

| Nominal | Socket Type |       |       | Structural Diameter |       |       |
|---------|-------------|-------|-------|---------------------|-------|-------|
| Size    | d1          | d2    | l     | D                   | d     | L     |
| 20      | 20.3        | 20.1  | 16.0  | 27.0                | 17.0  | 57.0  |
| 25      | 25.3        | 25.1  | 19.0  | 33.0                | 23.0  | 68.0  |
| 32      | 32.3        | 32.1  | 22.0  | 40.5                | 29.0  | 81.0  |
| 40      | 40.3        | 40.1  | 26.0  | 49.1                | 37.0  | 97.0  |
| 50      | 50.3        | 50.1  | 32.0  | 61.0                | 47.0  | 114.0 |
| 63      | 63.3        | 63.1  | 38.0  | 75.0                | 60.0  | 142.0 |
| 75      | 75.3        | 75.1  | 44.0  | 87.0                | 72.0  | 166.0 |
| 90      | 90.3        | 90.1  | 51.0  | 104.0               | 87.1  | 196.0 |
| 110     | 110.4       | 110.1 | 61.0  | 125.4               | 106.1 | 236.0 |
| 140     | 140.5       | 140.2 | 77.0  | 162.0               | 133.0 | 307.0 |
| 160     | 160.5       | 160.2 | 86.0  | 186.0               | 154.0 | 338.0 |
| 200     | 200.6       | 200.2 | 130.0 | 240.0               | 185.0 | 440.0 |
| 250     | 250.8       | 250.3 | 145.0 | 290.0               | 239.0 | 565.0 |



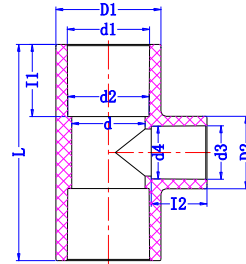
### 4. Coupling (SxS)

| Nominal | Socket Type |       |       | Structural Diameter |       |       |
|---------|-------------|-------|-------|---------------------|-------|-------|
| Size    | d1          | d2    | l     | D                   | d     | L     |
| 20      | 20.3        | 20.1  | 16.0  | 27.0                | 17.0  | 37.0  |
| 25      | 25.3        | 25.1  | 19.0  | 33.0                | 23.0  | 42.0  |
| 32      | 32.3        | 32.1  | 22.0  | 40.5                | 29.0  | 49.0  |
| 40      | 40.3        | 40.1  | 26.0  | 49.1                | 37.0  | 57.0  |
| 50      | 50.3        | 50.1  | 32.0  | 61.0                | 47.0  | 68.0  |
| 63      | 63.3        | 63.1  | 38.0  | 75.0                | 60.0  | 82.0  |
| 75      | 75.3        | 75.1  | 44.0  | 87.0                | 72.0  | 95.0  |
| 90      | 90.3        | 90.1  | 51.0  | 104.0               | 87.1  | 108.0 |
| 110     | 110.4       | 110.1 | 61.0  | 125.4               | 106.1 | 130.0 |
| 140     | 140.5       | 140.2 | 77.0  | 162.0               | 133.0 | 162.0 |
| 160     | 160.5       | 160.2 | 86.0  | 186.0               | 154.0 | 180.0 |
| 200     | 200.6       | 200.2 | 130.0 | 240.0               | 185.0 | 268.0 |
| 225     | 225.7       | 225.3 | 130.0 | 261.0               | 218.0 | 268.0 |
| 250     | 250.8       | 250.3 | 145.0 | 290.0               | 239.0 | 300.0 |



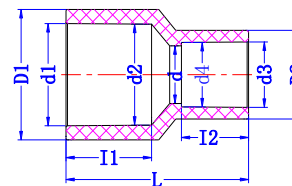
### 5. Reducing Tee (SxSxS)

| Nominal Size | Socket Type |       |       |       |       |      | Structural Diameter |       |       |       |
|--------------|-------------|-------|-------|-------|-------|------|---------------------|-------|-------|-------|
|              | d1          | d2    | I1    | d3    | d4    | I2   | D1                  | D2    | d     | L     |
| 25*20        | 25.3        | 25.1  | 19.0  | 20.3  | 20.1  | 16.0 | 33.0                | 27.0  | 23.0  | 75.8  |
| 32*20        | 32.3        | 32.1  | 22.0  | 20.3  | 20.1  | 16.0 | 40.5                | 27.0  | 29.0  | 74.0  |
| 32*25        | 32.3        | 32.1  | 22.0  | 25.3  | 25.1  | 19.0 | 40.5                | 33.0  | 29.0  | 74.0  |
| 40*20        | 40.3        | 40.1  | 26.0  | 20.3  | 20.1  | 16.0 | 49.1                | 27.0  | 37.0  | 89.0  |
| 40*25        | 40.3        | 40.1  | 26.0  | 25.3  | 25.1  | 19.0 | 49.1                | 33.0  | 37.0  | 89.0  |
| 40*32        | 40.3        | 40.1  | 26.0  | 32.3  | 32.1  | 22.0 | 49.1                | 40.5  | 37.0  | 89.0  |
| 50*20        | 50.3        | 50.1  | 32.0  | 20.3  | 20.1  | 16.0 | 61.0                | 27.0  | 47.0  | 102.0 |
| 50*25        | 50.3        | 50.1  | 32.0  | 25.3  | 25.1  | 19.0 | 61.0                | 33.0  | 47.0  | 102.0 |
| 50*32        | 50.3        | 50.1  | 32.0  | 32.3  | 32.1  | 22.0 | 61.0                | 40.5  | 47.0  | 102.0 |
| 50*40        | 50.3        | 50.1  | 32.0  | 40.3  | 40.1  | 26.0 | 61.0                | 49.1  | 47.0  | 102.0 |
| 63*20        | 63.3        | 63.1  | 38.0  | 20.3  | 20.1  | 16.0 | 75.0                | 27.0  | 60.0  | 112.0 |
| 63*25        | 63.3        | 63.1  | 38.0  | 25.3  | 25.1  | 19.0 | 75.0                | 33.0  | 60.0  | 112.0 |
| 63*32        | 63.3        | 63.1  | 38.0  | 32.3  | 32.1  | 22.0 | 75.0                | 40.5  | 60.0  | 112.0 |
| 63*40        | 63.3        | 63.1  | 38.0  | 40.3  | 40.1  | 26.0 | 75.0                | 49.1  | 60.0  | 112.0 |
| 63*50        | 63.3        | 63.1  | 38.0  | 50.3  | 50.1  | 32.0 | 75.0                | 61.0  | 60.0  | 112.0 |
| 75*32        | 75.3        | 75.1  | 44.0  | 32.3  | 32.1  | 22.0 | 87.0                | 40.5  | 72.1  | 154.0 |
| 75*40        | 75.3        | 75.1  | 44.0  | 40.3  | 40.1  | 26.0 | 87.0                | 49.1  | 72.1  | 154.0 |
| 75*50        | 75.3        | 75.1  | 44.0  | 50.3  | 50.1  | 32.0 | 87.0                | 61.0  | 72.1  | 154.0 |
| 75*63        | 75.3        | 75.1  | 44.0  | 63.3  | 63.1  | 38.0 | 87.0                | 75.0  | 72.1  | 154.0 |
| 90*50        | 90.3        | 90.1  | 51.0  | 50.3  | 50.1  | 32.0 | 104.0               | 61.0  | 87.1  | 184.0 |
| 90*63        | 90.3        | 90.1  | 51.0  | 63.3  | 63.1  | 38.0 | 104.0               | 75.0  | 87.1  | 184.0 |
| 90*75        | 90.3        | 90.1  | 51.0  | 75.3  | 75.1  | 44.0 | 104.0               | 87.0  | 87.1  | 184.0 |
| 110*50       | 110.4       | 110.2 | 61.0  | 50.3  | 50.1  | 32.0 | 125.4               | 61.0  | 106.1 | 190.0 |
| 110*63       | 110.4       | 110.2 | 61.0  | 63.3  | 63.1  | 38.0 | 125.4               | 75.0  | 106.1 | 190.0 |
| 110*75       | 110.4       | 110.2 | 61.0  | 75.3  | 75.1  | 44.0 | 125.4               | 87.0  | 106.1 | 218.0 |
| 110*90       | 110.4       | 110.2 | 61.0  | 90.3  | 90.1  | 51.0 | 125.4               | 104.0 | 106.1 | 218.0 |
| 160*63       | 160.5       | 160.2 | 86.0  | 63.3  | 63.1  | 38.0 | 186.0               | 75.0  | 185.0 | 338.0 |
| 160*75       | 160.5       | 160.2 | 86.0  | 75.3  | 75.1  | 44.0 | 186.0               | 87.0  | 185.0 | 338.0 |
| 160*90       | 160.5       | 160.2 | 86.0  | 90.3  | 90.1  | 51.0 | 186.0               | 104.0 | 185.0 | 338.0 |
| 160*110      | 160.5       | 160.2 | 86.0  | 110.4 | 110.2 | 61.0 | 186.0               | 125.4 | 185.0 | 338.0 |
| 200*75       | 200.6       | 200.2 | 130.0 | 75.3  | 75.1  | 44.0 | 240.0               | 87.0  | 218.0 | 440.0 |
| 200*90       | 200.6       | 200.2 | 130.0 | 90.3  | 90.1  | 51.0 | 240.0               | 104.0 | 218.0 | 440.0 |
| 200*110      | 200.6       | 200.2 | 130.0 | 110.4 | 110.2 | 61.0 | 240.0               | 125.4 | 218.0 | 440.0 |
| 200*160      | 200.6       | 200.2 | 130.0 | 160.5 | 160.2 | 86.0 | 240.0               | 186.0 | 218.0 | 440.0 |



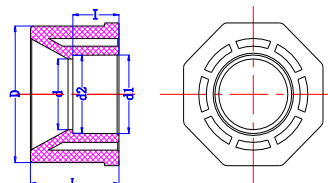
### 6. Reducer Coupling (SxS)

| Nominal Size | Socket Type |       |       |       |       |      | Structural Diameter |       |       |       |
|--------------|-------------|-------|-------|-------|-------|------|---------------------|-------|-------|-------|
|              | d1          | d2    | I1    | d3    | d4    | I2   | D1                  | D2    | d     | L     |
| 25*20        | 25.3        | 25.1  | 19.0  | 20.3  | 20.1  | 16.0 | 33.0                | 27.0  | 23.0  | 42.5  |
| 32*20        | 32.3        | 32.1  | 22.0  | 20.3  | 20.1  | 16.0 | 40.5                | 27.0  | 29.0  | 48.0  |
| 32*25        | 32.3        | 32.1  | 22.0  | 25.3  | 25.1  | 19.0 | 40.5                | 33.0  | 29.0  | 48.0  |
| 40*20        | 40.3        | 40.1  | 26.0  | 20.3  | 20.1  | 16.0 | 49.1                | 27.0  | 37.0  | 55.0  |
| 40*25        | 40.3        | 40.1  | 26.0  | 25.3  | 25.1  | 19.0 | 49.1                | 33.0  | 37.0  | 55.0  |
| 40*32        | 40.3        | 40.1  | 26.0  | 32.3  | 32.1  | 22.0 | 49.1                | 40.5  | 37.0  | 55.0  |
| 50*20        | 50.3        | 50.1  | 32.0  | 20.3  | 20.1  | 16.0 | 61.0                | 27.0  | 47.0  | 64.0  |
| 50*25        | 50.3        | 50.1  | 32.0  | 25.3  | 25.1  | 19.0 | 61.0                | 33.0  | 47.0  | 64.0  |
| 50*32        | 50.3        | 50.1  | 32.0  | 32.3  | 32.1  | 22.0 | 61.0                | 40.5  | 47.0  | 64.0  |
| 50*40        | 50.3        | 50.1  | 32.0  | 40.3  | 40.1  | 26.0 | 61.0                | 49.1  | 47.0  | 64.0  |
| 63*20        | 63.3        | 63.1  | 38.0  | 20.3  | 20.1  | 16.0 | 75.0                | 27.0  | 60.0  | 68.0  |
| 63*25        | 63.3        | 63.1  | 38.0  | 25.3  | 25.1  | 19.0 | 75.0                | 33.0  | 60.0  | 68.0  |
| 63*32        | 63.3        | 63.1  | 38.0  | 32.3  | 32.1  | 22.0 | 75.0                | 40.5  | 60.0  | 68.0  |
| 63*40        | 63.3        | 63.1  | 38.0  | 40.3  | 40.1  | 26.0 | 75.0                | 49.1  | 60.0  | 77.0  |
| 63*50        | 63.3        | 63.1  | 38.0  | 50.3  | 50.1  | 32.0 | 75.0                | 61.0  | 60.0  | 77.0  |
| 75*50        | 75.3        | 75.1  | 44.0  | 50.3  | 50.1  | 32.0 | 87.0                | 61.0  | 72.1  | 83.0  |
| 75*63        | 75.3        | 75.1  | 44.0  | 63.3  | 63.1  | 38.0 | 87.0                | 75.0  | 72.1  | 92.0  |
| 90*50        | 90.3        | 90.1  | 51.0  | 50.3  | 50.1  | 32.0 | 104.0               | 61.0  | 87.1  | 100.0 |
| 90*63        | 90.3        | 90.1  | 51.0  | 63.3  | 63.1  | 38.0 | 104.0               | 75.0  | 87.1  | 100.0 |
| 90*75        | 90.3        | 90.1  | 51.0  | 75.3  | 75.1  | 44.0 | 104.0               | 87.0  | 87.1  | 106.0 |
| 110*50       | 110.4       | 110.2 | 61.0  | 50.3  | 50.1  | 32.0 | 125.4               | 61.0  | 106.1 | 110.0 |
| 110*63       | 110.4       | 110.2 | 61.0  | 63.3  | 63.1  | 38.0 | 125.4               | 75.0  | 106.1 | 110.0 |
| 110*75       | 110.4       | 110.2 | 61.0  | 75.3  | 75.1  | 44.0 | 125.4               | 87.0  | 106.1 | 125.0 |
| 110*90       | 110.4       | 110.2 | 61.0  | 90.3  | 90.1  | 51.0 | 125.4               | 104.0 | 106.1 | 125.0 |
| 160*63       | 160.5       | 160.2 | 86.0  | 63.3  | 63.1  | 38.0 | 186.0               | 75.0  | 185.0 | 140.0 |
| 160*75       | 160.5       | 160.2 | 86.0  | 75.3  | 75.1  | 44.0 | 186.0               | 87.0  | 185.0 | 150.0 |
| 160*90       | 160.5       | 160.2 | 86.0  | 90.3  | 90.1  | 51.0 | 186.0               | 104.0 | 185.0 | 165.0 |
| 160*110      | 160.5       | 160.2 | 86.0  | 110.4 | 110.2 | 61.0 | 186.0               | 125.4 | 185.0 | 175.0 |
| 200*75       | 200.6       | 200.2 | 130.0 | 75.3  | 75.1  | 44.0 | 240.0               | 87.0  | 218.0 | 200.0 |
| 200*90       | 200.6       | 200.2 | 130.0 | 90.3  | 90.1  | 51.0 | 240.0               | 104.0 | 218.0 | 210.0 |
| 200*110      | 200.6       | 200.2 | 130.0 | 110.4 | 110.2 | 61.0 | 240.0               | 125.4 | 218.0 | 230.0 |



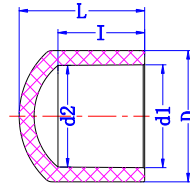
### 7. Reducer Bushing (SxS)

| Nominal Size | Outside Dia. D | Socket Type |      | Structural Dia. |      |
|--------------|----------------|-------------|------|-----------------|------|
|              |                | d1          | d2   | d               | L    |
| 25*20        | 25.0           | 20.3        | 20.1 | 16.0            | 20.0 |
| 32*25        | 32.0           | 25.3        | 25.1 | 20.0            | 24.0 |
| 40*32        | 40.0           | 32.3        | 32.1 | 23.0            | 28.0 |
| 50*40        | 50.0           | 40.3        | 40.1 | 28.0            | 32.0 |
| 63*50        | 63.0           | 50.3        | 50.1 | 32.0            | 38.0 |
| 75*63        | 75.0           | 63.3        | 60.1 | 38.0            | 42.0 |
| 90*63        | 90.0           | 63.3        | 60.1 | 38.0            | 61.0 |
| 90*75        | 90.0           | 75.3        | 75.1 | 45.0            | 61.0 |
| 110*75       | 110.0          | 63.3        | 60.1 | 38.0            | 73.0 |
| 110*90       | 110.0          | 90.3        | 90.1 | 51.0            | 73.0 |



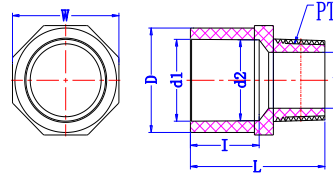
### 8. Cap (SxS)

| Nominal Size | Socket Type |       |       | Structural Diameter |       |
|--------------|-------------|-------|-------|---------------------|-------|
|              | d1          | d2    | l     | D                   | L     |
| 20           | 20.3        | 20.1  | 16.0  | 27.0                | 28.5  |
| 25           | 25.3        | 25.1  | 20.0  | 33.0                | 29.5  |
| 32           | 32.3        | 32.1  | 24.0  | 40.5                | 35.5  |
| 40           | 40.3        | 40.1  | 28.0  | 49.1                | 40.0  |
| 50           | 50.3        | 50.1  | 32.0  | 61.0                | 46.5  |
| 63           | 63.3        | 63.1  | 38.0  | 75.0                | 54.5  |
| 75           | 75.3        | 75.1  | 47.0  | 87.0                | 66.5  |
| 90           | 90.3        | 90.1  | 52.5  | 104.0               | 74.5  |
| 110          | 110.4       | 110.1 | 63.0  | 125.4               | 85.5  |
| 160          | 160.5       | 160.2 | 86.0  | 186.0               | 105.0 |
| 200          | 200.6       | 200.2 | 130.0 | 240.0               | 185.0 |



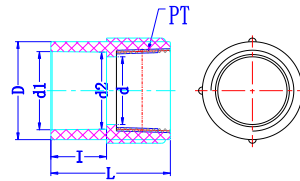
### 9. Male Adaptor (SxT)

| Nominal Size | Outside Dia. D | Socket Type |      |      | Structural Diameter |      |      |         |
|--------------|----------------|-------------|------|------|---------------------|------|------|---------|
|              |                | d1          | d2   | l    | W                   | d    | L    | PT/inch |
| 20*1/2"      | 27.0           | 20.3        | 20.1 | 16.0 | 30.0                | 13.2 | 38.5 | 14.0    |
| 25*3/4"      | 33.0           | 25.3        | 25.1 | 19.0 | 35.0                | 19.0 | 45.0 | 14.0    |
| 32*1"        | 40.5           | 32.3        | 32.1 | 29.0 | 45.0                | 24.0 | 56.8 | 11.0    |
| 40*1 1/4"    | 49.1           | 40.3        | 40.1 | 26.0 | 51.0                | 32.0 | 57.5 | 11.0    |
| 50*1 1/2"    | 61.0           | 50.3        | 50.1 | 35.0 | 64.0                | 38.0 | 67.5 | 11.0    |
| 63*2"        | 75.0           | 63.3        | 63.1 | 38.0 | 78.0                | 50.0 | 78.0 | 11.0    |



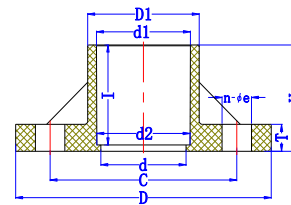
### 10. Female Adaptor (SxT)

| Nominal Size | Outside Dia. D | Socket Type |      |      | Structural Diameter |      |      |         |
|--------------|----------------|-------------|------|------|---------------------|------|------|---------|
|              |                | d1          | d2   | l    | W                   | d    | L    | PT/inch |
| 20*1/2"      | 27.0           | 20.3        | 20.1 | 16.0 | 30.0                | 13.2 | 38.5 | 14.0    |
| 25*3/4"      | 33.0           | 25.3        | 25.1 | 19.0 | 35.0                | 19.0 | 45.0 | 14.0    |
| 32*1"        | 40.5           | 32.3        | 32.1 | 29.0 | 45.0                | 24.0 | 56.8 | 11.0    |
| 40*1 1/4"    | 49.1           | 40.3        | 40.1 | 26.0 | 51.0                | 32.0 | 57.5 | 11.0    |
| 50*1 1/2"    | 61.0           | 50.3        | 50.1 | 35.0 | 64.0                | 38.0 | 67.5 | 11.0    |
| 63*2"        | 75.0           | 63.3        | 63.1 | 38.0 | 78.0                | 50.0 | 78.0 | 11.0    |



### 11. T/S Flange (one piece flange) - Socket End

| SIZE | D     | D1    | C     | d     | d1    | d2    | H     | T    | l     | n-φe  |
|------|-------|-------|-------|-------|-------|-------|-------|------|-------|-------|
| 20   | 95.0  | 32.0  | 65.0  | 15.0  | 20.3  | 20.1  | 35.0  | 14.0 | 16.0  | 4-15  |
| 25   | 105.0 | 35.0  | 75.0  | 20.0  | 25.3  | 25.1  | 40.0  | 15.0 | 20.0  | 4-15  |
| 32   | 125.0 | 43.0  | 85.0  | 25.0  | 32.3  | 32.1  | 45.0  | 16.0 | 24.0  | 4-19  |
| 40   | 140.0 | 52.0  | 100.0 | 32.0  | 40.3  | 40.1  | 49.0  | 16.0 | 28.0  | 4-19  |
| 50   | 150.0 | 59.0  | 110.0 | 43.0  | 50.3  | 50.1  | 59.0  | 18.0 | 32.0  | 4-19  |
| 63   | 165.0 | 72.0  | 125.0 | 55.0  | 63.3  | 63.1  | 66.0  | 20.0 | 38.0  | 4-19  |
| 75   | 185.0 | 89.0  | 145.0 | 65.0  | 75.3  | 75.1  | 70.0  | 22.0 | 47.0  | 4-19  |
| 90   | 200.0 | 106.0 | 160.0 | 80.0  | 90.3  | 90.1  | 73.0  | 22.0 | 52.5  | 8-19  |
| 110  | 220.0 | 132.0 | 180.0 | 100.0 | 110.4 | 110.1 | 93.0  | 22.0 | 63.0  | 8-19  |
| 160  | 285.0 | 187.0 | 240.0 | 150.0 | 160.5 | 160.2 | 142.0 | 26.0 | 86.0  | 8-23  |
| 200  | 343.0 | 228.0 | 298.0 | 180.0 | 200.6 | 200.2 | 160.0 | 30.0 | 130.0 | 8-23  |
| 250  | 395.0 | 278.0 | 350.0 | 225.0 | 250.8 | 250.2 | 175.0 | 32.0 | 145.0 | 12-23 |



### 12. Van Stone Flange (2pcs flange) - Socket End

| SIZE | D     | D1    | C     | d     | d1    | d2    | H     | T    | l     | n-φe  |
|------|-------|-------|-------|-------|-------|-------|-------|------|-------|-------|
| 20   | 95.0  | 30.6  | 65.0  | 15.0  | 20.3  | 20.1  | 26.0  | 14.0 | 21.6  | 26.0  |
| 25   | 100.0 | 36.0  | 75.0  | 20.0  | 25.3  | 25.1  | 29.5  | 15.0 | 23.4  | 29.5  |
| 32   | 125.0 | 43.8  | 85.0  | 25.0  | 32.3  | 32.1  | 32.2  | 16.0 | 28.7  | 32.2  |
| 40   | 135.0 | 52.6  | 100.0 | 32.0  | 40.3  | 40.1  | 38.5  | 16.0 | 31.7  | 38.5  |
| 50   | 140.0 | 60.7  | 110.0 | 40.0  | 50.3  | 50.1  | 40.5  | 18.0 | 35.0  | 40.5  |
| 63   | 155.0 | 74.8  | 125.0 | 51.0  | 63.3  | 63.1  | 45.0  | 20.0 | 38.2  | 45.0  |
| 75   | 175.0 | 89.6  | 145.0 | 63.0  | 75.3  | 75.1  | 51.0  | 24.0 | 45.0  | 51.0  |
| 90   | 185.0 | 106.5 | 160.0 | 77.0  | 90.3  | 90.1  | 55.0  | 26.0 | 48.0  | 55.0  |
| 110  | 210.0 | 133.0 | 180.0 | 102.0 | 110.4 | 110.1 | 64.0  | 28.0 | 57.5  | 64.0  |
| 160  | 280.0 | 187.1 | 240.0 | 156.0 | 160.5 | 160.2 | 87.0  | 32.0 | 76.8  | 87.0  |
| 200  | 330.0 | 237.1 | 298.0 | 204.0 | 200.6 | 200.2 | 116.0 | 35.0 | 104.2 | 116.0 |
| 250  | 400.0 | 293.8 | 362.0 | 256.0 | 250.8 | 250.2 | 150.0 | 42.0 | 128.6 | 150.0 |
| 315  | 445.0 | 344.6 | 432.0 | 307.0 | 324.6 | 323.5 | 190.0 | 52.0 | 172.0 | 190.0 |

