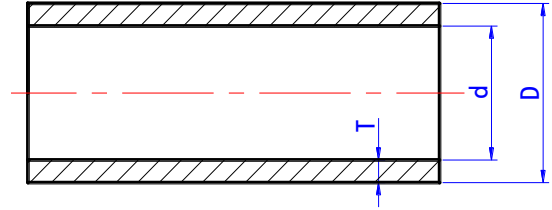


Clear PVC Pipe

SPECIFICATIONS:

Nominal	Socket Type(SCH40)				
	Size	D	Tolerance	T(min)	Tolerance
1/2"	21.34	±0.10	2.77	+0.51	15.76
3/4"	26.67	±0.10	2.87	+0.51	20.96
1"	33.40	±0.13	3.38	+0.51	26.64
1¼"	42.16	±0.13	3.56	+0.51	35.08
1½"	48.26	±0.15	3.68	+0.51	40.94
2"	60.32	±0.15	3.91	+0.51	52.48
2½"	73.02	±0.18	5.16	+0.61	62.68
3"	88.90	±0.20	5.49	+0.66	77.92
4"	114.30	±0.23	6.02	+0.71	102.26
5"	141.30	±0.25	6.55	+0.79	128.20
6"	168.28	±0.28	7.11	+0.86	154.08



DESCRIPTION:

- 1) Material: Clear PVC
- 2) Size: 1/2" - 6"
- 3) Standard: ASTM SCH40
- 4) Operating temperature : 0 ~ 55°C
- 5) Typical applications : double containment, sight glass, aquarium, etc.
- 6) SCH80, PN16 or PN10 can be produced as per requirement

Note : Do not recommend to service or test with compressed air or gases.



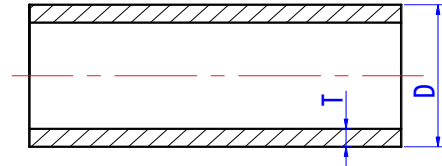
CHARACTER:

- Excellent transparency & leakage monitoring
- Good electrical resistance
- Low friction loss
- Cost effective
- Easy installation & light weight
- Guaranteed quality & life-span

UPVC & CPVC Pipe (ASTM Schedule 80 & Schedule 40)

SPECIFICATIONS:

Nominal SIZE	Socket Type					
	D(MM)	Tolerance	SCH80		SCH40	
			T(min/mm)	Tolerance	T(min/mm)	Tolerance
1/2"	21.34	±0.10	3.73	+0.51	2.77	+0.51
3/4"	26.67	±0.10	3.91	+0.51	2.87	+0.51
1"	33.40	±0.13	4.55	+0.53	3.38	+0.51
1¼"	42.16	±0.13	4.85	+0.58	3.56	+0.51
1½"	48.26	±0.15	5.08	+0.61	3.68	+0.51
2"	60.32	±0.15	5.54	+0.66	3.91	+0.51
2½"	73.02	±0.18	7.01	+0.84	5.16	+0.61
3"	88.90	±0.20	7.62	+0.91	5.49	+0.66
4"	114.30	±0.23	8.56	+1.02	6.02	+0.71
5"	141.30	±0.25	9.52	+1.14	6.55	+0.79
6"	168.28	±0.28	10.97	+1.32	7.11	+0.86
8"	219.08	±0.38	12.70	+1.52	8.18	+0.99
10"	273.50	±0.38	15.06	+1.80	9.27	+1.12
12"	323.85	±0.38	17.45	+2.08	10.31	+1.24
14"	355.60	±0.38	19.05	+2.28	11.10	+1.35



DESCRIPTION:

- 1) Material: UPVC, CPVC
- 2) Size: 1/2" - 14"
- 3) Standard: ASTM SCH80 / SCH40
- 4) Operating temperature : UPVC(0 ~ 55°C); CPVC(0 ~95°C)
- 5) Typical applications : industrial, sewage, water treatment, drain etc.

Note : Do not recommend to service or test with compressed air or gases.

CHARACTER:

★ UPVC Pipe

- Light weight and cost effective
- Low friction loss & thermal conductivity
- Good electrical, acid and alkali resistance
- Guaranteed quality & life-span

★ CPVC Pipe

- Low smoke generation
- Low friction loss & thermal conductivity
- Outstanding fire performance characteristics
- Excellent chemical resistance & mechanical strength
- Guaranteed quality & life-span



SHREYANS IMPORTS AND EXPORTS

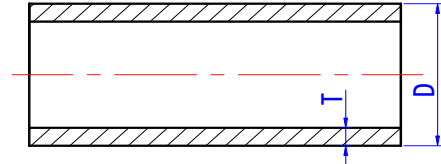
Address: Plot 6/2, Shed No 6, Sumukh Ind Estate, Phase 1, Opposite Kiran Industries, GIDC, Vatva, Ahmedabad 382445, India
Cell: +91 90 999 89 276, +91 90 999 89 280 Web: www.shreyanswater.com



UPVC & CPVC Pipe (DIN)

SPECIFICATIONS:

Size	D	Tolerance	T(min)	Tolerance	pressure
DN15	20	+0.2	2.3	+0.4	-
DN20	25	+0.2	2.8	+0.5	-
DN25	32	+0.2	3.6	+0.5	-
DN32	40	+0.2	3	+0.5	S6.3
DN40	50	+0.2	3.7	+0.6	S6.3
DN50	63	+0.3	4.7	+0.7	S6.3
DN65	75	+0.3	5.6	+0.8	S6.3
DN80	90	+0.3	6.7	+0.9	S6.3
DN100	110	+0.4	8.1	+1.1	S6.3
DN125	140	+0.5	10.3	+1.3	S6.3
DN150	160	+0.5	11.8	+1.4	S6.3
DN180	200	+0.6	14.7	+1.7	S6.3
DN200	225	+0.7	16.6	+1.9	S6.3
DN250	250	+0.8	18.4	+2.3	S6.3
DN300	315	+1.0	23.2	+2.6	S6.3
DN350	355	+1.1	26.1	+2.9	S6.3



DESCRIPTION:

- 1) Material: UPVC, CPVC
- 2) Size: DN15 - DN350 ; 20mm - 355mm
- 3) Standard: DIN PN16
- 4) Operating temperature : UPVC(0 ~ 55°C); CPVC(0 ~95°C)
- 5) Typical applications : industrial, sewage, water treatment, drain etc.

Note : Do not recommend to service or test with compressed air or gases.

CHARACTER:

- ★ UPVC Pipe
 - Light weight and cost effective
 - Low friction loss & thermal conductivity
 - Good electrical, acid and alkali resistance
 - Guaranteed quality & life-span
- ★ CPVC Pipe
 - Low smoke generation
 - Low friction loss & thermal conductivity
 - Outstanding fire performance characteristics
 - Excellent chemical resistance & mechanical strength
 - Guaranteed quality & life-span

PPH Pipe

SPECIFICATIONS:

Size	D	S5	S4	S3.2
		SDR 11	SDR 9	SDR 7.4
		thk.	thk.	thk.
DN15	20	2	2.3	2.8
DN20	25	2.3	2.8	3.5
DN25	32	2.9	3.6	4.4
DN32	40	3.7	4.5	5.5
DN40	50	4.6	5.6	6.9
DN50	63	5.8	7.1	8.6
DN65	75	6.8	8.4	10.3
DN80	90	8.2	10.1	12.3
DN100	110	10	12.3	15.1
DN125	140	12.7	15.7	19.2
DN150	160	14.6	17.9	21.9



DESCRIPTION:

- 1) Material: PPH
- 2) Size: 20mm - 160mm
- 3) Operating temperature : 0 ~95°C
- 4) Typical applications : chemical etched & plated piping systems, food processing systems, water treatment

Note : Do not recommend to service or test with compressed air or gases.

CHARACTER:

- Excellent energy efficiency
- High heat distortion temperature
- Low smoke toxicity
- Low thermal conductivity
- Light weight & Easy installation
- Guaranteed quality & life-span